

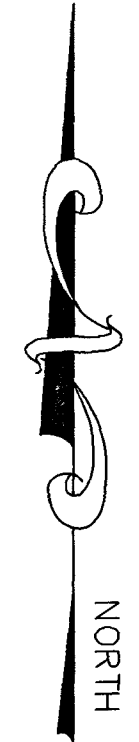
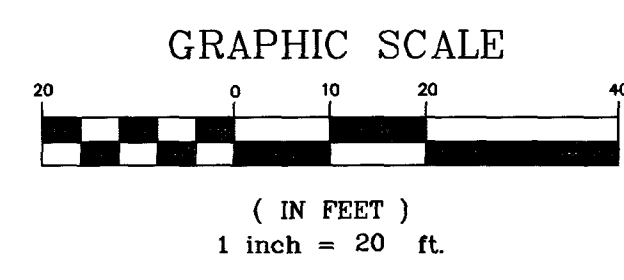
98

BANANA PATCH

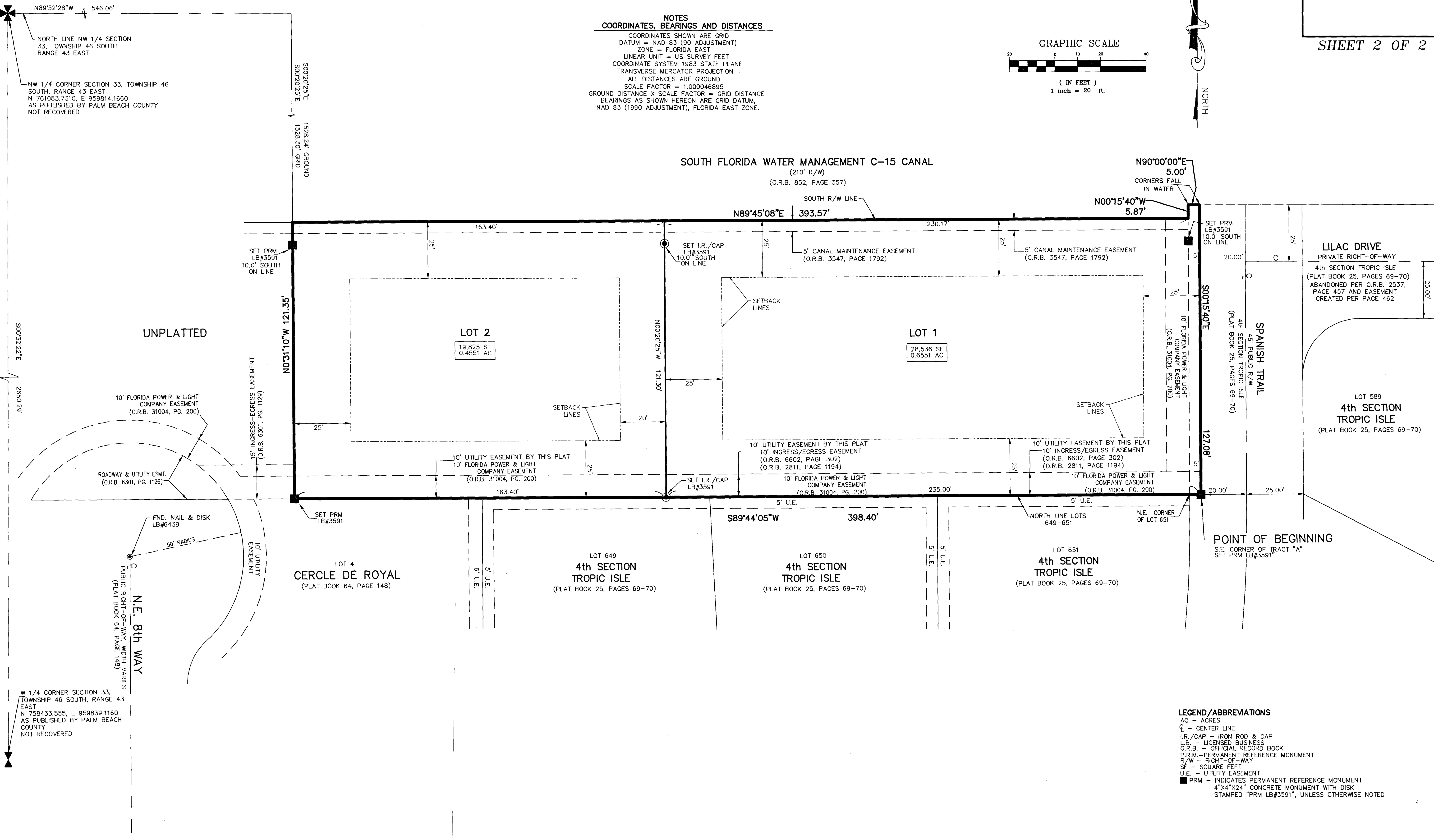
BEING A REPLAT OF TRACT "A", TROPIC ISLE 4TH SECTION, ACCORDING TO THE PLAT THEREOF, AS RECORDED IN PLAT BOOK 25, PAGE 69 OF THE PUBLIC RECORDS OF PALM BEACH COUNTY, FLORIDA AND A PORTION OF THE SOUTH HALF OF THE NORTHWEST ONE-QUARTER OF SECTION 33, TOWNSHIP 46 SOUTH, RANGE 43 EAST CITY OF BOCA RATON, PALM BEACH COUNTY, FLORIDA.

THIS INSTRUMENT PREPARED BY
DAVID P. LINDLEY
OF
CAULFIELD & WHEELER, INC.
SURVEYORS - ENGINEERS - PLANNERS
7900 GLADES ROAD, SUITE 100
BOCA RATON, FLORIDA 33434 - (561)392-1991

NOTES
COORDINATES, BEARINGS AND DISTANCES
COORDINATES SHOWN ARE GRID
DATUM = NAD 83 (90 ADJUSTMENT)
ZONE = FLORIDA EAST
LINEAR UNIT = US SURVEY FEET
COORDINATE SYSTEM 1983 STATE PLANE
TRANSVERSE MERCATOR PROJECTION
ALL DISTANCES ARE GROUND
SCALE FACTOR = 1.000046895
GROUND DISTANCE X SCALE FACTOR = GRID DISTANCE
BEARINGS AS SHOWN HEREON ARE GRID DATUM,
NAD 83 (1990 ADJUSTMENT), FLORIDA EAST ZONE.



SHEET 2 OF 2



LEGEND/ABBREVIATIONS
AC - ACRES
C - CENTER LINE
I.R./CAP - IRON ROD & CAP
L.B. - LICENSED BUSINESS
O.R.B. - OFFICIAL RECORD BOOK
P.R.M. - PERMANENT REFERENCE MONUMENT
R/W - RIGHT-OF-WAY
SF - SQUARE FEET
U.E. - UTILITY EASEMENT
PRM - INDICATES PERMANENT REFERENCE MONUMENT
4"x4"x24" CONCRETE MONUMENT WITH DISK
STAMPED "PRM LB#3591", UNLESS OTHERWISE NOTED